

makeoverofthemonth

Entertaining Dining Room

Designed by Brian Patterson Designs Inc.

BY KARINA TIMMEL

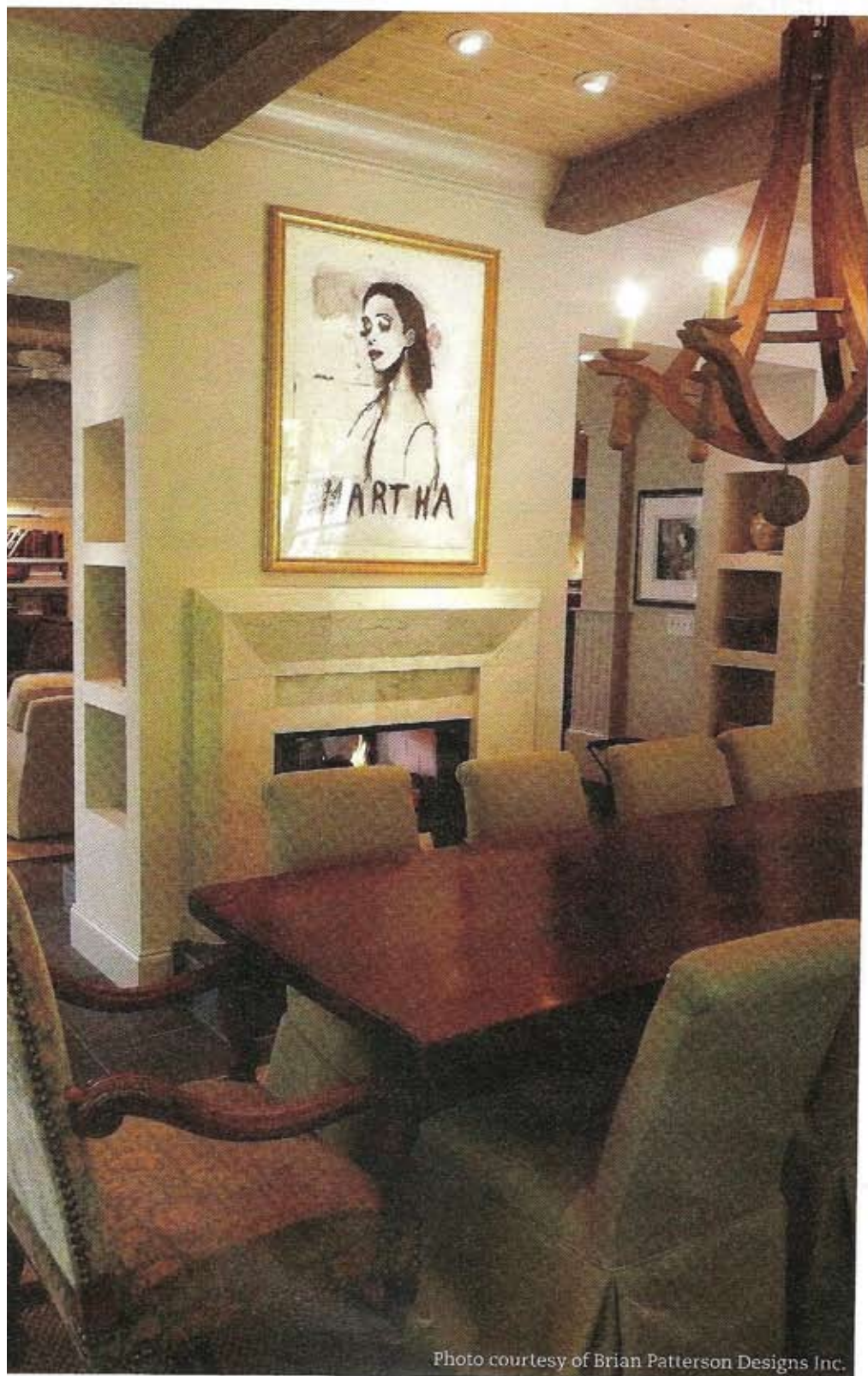


Photo courtesy of Brian Patterson Designs Inc.



• **CHANDELIER**
Solid wood with turned pendants by Isa Chandelier. Oly, www.olystudio.com



• **CHAIRS**
Parson's chairs covered in burlap. Scott Antique Market, www.scottantiquemarket.com



• **CARPET**
Bound sisal Siskiyou Special, Midnight Bay carpet. Myers Carpets, www.myerscarpet.com



• **ART**
"Martha" charcoal/chalk on paper by Todd Murphy. Atlanta Ballet Ball auction, www.atlantaballet.com

Ever since the homeowners purchased this late-1920s farmhouse 14 years ago, they had a vision to remodel it. This year, their dream finally came to fruition with an overall update to the public areas of the house, including the cosmetic enhancement of its dining room (pictured here). The dining room's old structure was completely demolished and replaced with higher ceilings and a new layout that is open and conducive to frequent entertaining and nightly home-cooked family meals. Designers used the casual slate gray floors (that heat in the colder months) as inspiration for an earthy, clean palette of soft grays, creams and wood browns.

Editorial Resources begin on page 134.